

# AGENDA

**Meeting:** Royal Wootton Bassett and Cricklade Area Board  
**Place:** REME Museum, Lyneham, SN15 4XX  
**Date:** Wednesday 8 November 2017  
**Time:** 6:00pm Networking Session, 7:00pm Meeting starts

---

Including the Parishes of Braydon, Broad Town, Clyffe Pypard, Cricklade, Latton, Lydiard Millicent, Lydiard Tregoz, Lyneham & Bradenstoke, Marston Meysey, Purton, Tockenham and Royal Wootton Bassett.

---

**The Area Board welcomes and invites contributions from members of the public. The chairman will try to ensure that everyone who wishes to speak will have the opportunity to do so.**

If you have any requirements that would make your attendance at the meeting easier, please contact your Democratic Services Officer.

**Refreshments and networking opportunity from 6:00pm**

---

Please direct any enquiries on this Agenda to Kevin Fielding (Democratic Services Officer), direct line 01249 706612 or email [kevin.fielding@wiltshire.gov.uk](mailto:kevin.fielding@wiltshire.gov.uk)

All the papers connected with this meeting are available on the Council's website at [www.wiltshire.gov.uk](http://www.wiltshire.gov.uk)

Press enquiries to Communications on direct lines (01225) 713114 / 713115.

---

## Wiltshire Councillors

Cllr Allison Bucknell - Lyneham  
Cllr Mollie Groom - Royal Wootton Bassett East  
Cllr Mary Champion - Royal Wootton Bassett North  
Cllr Jacqui Lay - Purton  
Cllr Chris Hurst - Royal Wootton Bassett South  
Cllr Bob Jones MBE - Cricklade and Latton

## **RECORDING AND BROADCASTING NOTIFICATION**

Wiltshire Council may record this meeting for live and/or subsequent broadcast on the Council's website at <http://www.wiltshire.public-i.tv>. At the start of the meeting, the Chairman will confirm if all or part of the meeting is being recorded. The images and sound recordings may also be used for training purposes within the Council.

By entering the meeting room you are consenting to being recorded and to the use of those images and recordings for broadcasting and/or training purposes.

The meeting may also be recorded by the press or members of the public.

Any person or organisation choosing to film, record or broadcast any meeting of the Council, its Cabinet or committees is responsible for any claims or other liability resulting from them so doing and by choosing to film, record or broadcast proceedings they accept that they are required to indemnify the Council, its members and officers in relation to any such claims or liabilities.

Details of the Council's Guidance on the Recording and Webcasting of Meetings is available on request.

	<b>Time</b>
<p>1     <b>Networking Session</b></p> <p>Display Stands prior to the meeting:</p> <ul style="list-style-type: none"> <li>• Wiltshire Wildlife Trust – showing us how to upcycle and make Christmas crafts</li> <li>• John Stanwix from SEAP (Support, Empower, Advocate, Promote) Military Advocacy</li> </ul>	<b>6:00pm</b>
<p>2     <b>Chairman's Welcome and Introductions</b></p>	<b>7:00pm</b>
<p>3     <b>Apologies for Absence</b></p>	
<p>4     <b>Minutes</b> (<i>Pages 1 - 4</i>)</p> <p>To approve the minutes of the meeting held on Wednesday 27 September 2017</p>	
<p>5     <b>Declarations of Interest</b></p> <p>To receive any declarations of disclosable interests or dispensations granted by the Standards Committee</p>	
<p>6     <b>Wiltshire - The Wider Picture</b></p> <p>News and information on what's going on in your local community and across the county</p>	
<p>7     <b>Strengthening our Communities</b> (<i>Pages 5 - 10</i>)</p> <p>Rebecca Seymour will provide information about forthcoming free, fun local events and activities for our older people</p> <p>Wiltshire Wildlife Trust will give an update on their Campaign Plan for RWB&amp;C</p> <p>REME Museum – Major R J Henderson will provide an update on the Museum</p> <p>Defence School of Electronic and Mechanical Engineering - Commandant Ed Heal will provide an update on the Defence School and wider community integration</p>	

Meet the team - Cllr Mary Champion will speak about her role as councillor for RWB North

Grant feedback – Bonnie Maslin from Lyneham Primary School will speak about how the school is benefitting from their new sensory room, with part-funding from the community grant scheme

Grant Funding

New Grant Applications November 2017

**Broad Town WI - seeking £945.00 towards purchase and installation of a defibrillator on the outside of Broad Town Village Hall.**

**Please view application here:**

[http://thematrix.wiltshire.council/areaboard\\_grants/grant\\_get.php?gid=2540](http://thematrix.wiltshire.council/areaboard_grants/grant_get.php?gid=2540)

**Purton Parish Council - seeking £4,612.50 towards ANPR and close circuit CCTV system at Purton Village Centre community facility.**

**Please view application here:**

[http://thematrix.wiltshire.council/areaboard\\_grants/grant\\_get.php?gid=2543](http://thematrix.wiltshire.council/areaboard_grants/grant_get.php?gid=2543)

**Marston Meysey Village Hall Association - seeking £5,000 towards replacement of the village hall roof.**

**Please view application here:**

[http://thematrix.wiltshire.council/areaboard\\_grants/grant\\_get.php?gid=2565](http://thematrix.wiltshire.council/areaboard_grants/grant_get.php?gid=2565)

**Purton and District Age Concern – seeking £5,000 for a new specialised minibus.**

**Please view application here:**

[http://thematrix.wiltshire.council/areaboard\\_grants/grant\\_get.php?gid=2590](http://thematrix.wiltshire.council/areaboard_grants/grant_get.php?gid=2590)

**Wiltshire and Berkshire Canal Trust – seeking £2,178.00 for finger posts and a mower for the Studley Grange site.**

**Please view application here:**

[http://thematrix.wiltshire.council/areaboard\\_grants/grant\\_get.php?gid=2591](http://thematrix.wiltshire.council/areaboard_grants/grant_get.php?gid=2591)

**Cricklade leisure centre – seeking £1,346.00 towards a defibrillator to be sited outside the leisure centre.**

**Please view application here:**

[http://services.wiltshire.gov.uk/areaboardgrants/grant\\_detail.php?gid=2568](http://services.wiltshire.gov.uk/areaboardgrants/grant_detail.php?gid=2568)

**Area Board initiative: £390.00 for 13 weeks Royal Wootton Bassett Memorial Hall hire @ £30 a session for new Seated Sports provision.**

**8 Spotlight on Parishes and Partners** *(Pages 11 - 14)*

To receive updates from our key partners, including:

- Wiltshire Police
- Dorset and Wiltshire Fire & Rescue Service
- Greensquare
- NHS Wiltshire
- Healthwatch Wiltshire
- CMAS
- Parish and Town Councils

**9 Task Group Reports and Decisions**

To consider reports from the following task groups and make any necessary decisions:

- Community Area Transport Group

**10 Wrap Up**

**8:30pm**



# MINUTES

**Meeting:** ROYAL WOOTTON BASSETT AND CRICKLADE AREA BOARD  
**Place:** Cricklade Town Hall  
**Date:** 27 September 2017  
**Start Time:** 6.00 pm  
**Finish Time:** 8.00 pm

---

Please direct any enquiries on these minutes to:

Kevin Fielding, direct line 01249 706612 or e-mail [kevin.fielding@wiltshire.gov.uk](mailto:kevin.fielding@wiltshire.gov.uk)

Papers available on the Wiltshire Council website at [www.wiltshire.gov.uk](http://www.wiltshire.gov.uk)

---

## **In Attendance:**

### **Wiltshire Councillors**

Cllr Allison Bucknell, Cllr Mollie Groom, Cllr Mary Champion, Cllr Jacqui Lay,  
Cllr Chris Hurst and Cllr Bob Jones MBE

### **Wiltshire Council Officers**

Alexa Davies – Community Engagement Manager  
Kevin Fielding – Democratic Services Officer

### **Town and Parish Clerks/Councillors**

Cricklade Town Council – Sue Holbrook, John Coole, Nick Dye & Mark Clarke  
Lydiard Millicent Parish Council – Deborah Bourne  
Lyneham & Bradenstoke Parish Council – G Jackson-Haines  
Purton Parish Council – Ray Thomas  
Royal Wootton Bassett Town Council – Sue Hughes, Nic Hughes & Johnathon Bourne  
Tockenham Parish Council – Diana Kirby

### **Partners**

Wiltshire Police – Inspector Mark Luffman & Stuart Welch  
Dorset & Wiltshire Fire and Rescue Service – Matty Maggs  
Health & Wellbeing Champion – Ellen Blacker

**Total in attendance: 50**

---

<b><u>Summary of Issues Discussed and Decision</u></b>	
20	<p><u>Chairman's Welcome and Introductions</u></p> <p>The Chairman welcomed everyone to the meeting of the Royal Wootton Bassett &amp; Cricklade Area Board and introduced the councillors and officers present.</p>
21	<p><u>Apologies for Absence</u></p> <p>Apologies for absence were received from Angela Jenson – Cricklade Town Council and Jason Underwood – Dorset &amp; Wiltshire Fire and Rescue Service.</p>
22	<p><u>Minutes</u></p> <p><b><u>Decision</u></b></p> <ul style="list-style-type: none"> <li>• <b>The minutes of the meetings held on Thursday 18 May 2017 and Wednesday 26 July 2017 were agreed a correct record and signed by the Chairman.</b></li> </ul>
23	<p><u>Declarations of Interest</u></p> <p>There were no declarations of interest.</p>
24	<p><u>Wiltshire - The Wider Picture</u></p> <p>The following Chairman's Announcements were noted:</p> <ul style="list-style-type: none"> <li>• Community Resilience - Emergency Planning</li> <li>• Assertive Outreach Work</li> <li>• Household Recycling Centre Refurbishment Programme</li> </ul>
25	<p><u>Strengthening our Communities</u></p> <p>Martin Litherland - Head of Waste Management Waste Services, Wiltshire Council gave a short presentation that outlined Wiltshire Council's Consultation on a new waste management strategy to shape how the Council collects and manages household waste and recycling.</p> <p>The meeting was able to take part in a short voting session that would feed into the main consultation.</p>



Points made included:

- The council needed to develop a new waste management strategy in order to shape how it collected and managed household waste and recycling in Wiltshire.
- The strategy needed to take into account Wiltshire's current challenges and also major developments in waste services.
- That following the award of a collection contract to Hills Waste, kerbside services would change from 30 July 2018. These changes would make it easier for residents to recycle more at home.
- That Wiltshire Council was currently undertaking a public consultation to ascertain the views of residents which would help to develop a new waste management strategy.
- The questions in the consultation were based on the outcome of workshops held with Wiltshire Council elected members in July 2017.

The Chairman thanked Martin Litherland for his presentation.

Cricklade Bloomers gave short update on their new home which is now a restored piece of neglected land behind Tesco in Cricklade High Street

Meet your team

Cllr Jacqui Lay gave a brief overview of his role as a Wiltshire Councillor.

Update from Alexa Davies - Community Engagement Manager.

Points made included:

- Royal Wootton Bassett Apprenticeship Fair – Tuesday 10 October 2017.
- WW1 Commemorative tree planting – 20 October is the deadline for Towns and Parishes to register their interest in taking part in this project.

Grant Funding

The Area Board members considered one community grant application:

**Decision**

**Purton Historical Society awarded £834.00 for a new Brockhurst Meadow information board.**

26	<p><u>Spotlight on Parishes and Partners</u></p> <p>Updates were received from the following Partners, Towns and Parishes:</p> <ul style="list-style-type: none"> <li>• Wiltshire Police - the written report was noted.</li> <li>• Dorset and Wiltshire Fire &amp; Rescue Service - the written report was noted.</li> <li>• Greensquare - the written report was noted.</li> <li>• NHS Wiltshire - the written report was noted.</li> <li>• Healthwatch Wiltshire - the written report was noted.</li> <li>• Community Monitoring and Support - the written report was noted.</li> <li>• Royal Wootton Bassett Town Council – the written report was noted.</li> <li>• Cricklade Town Council – the written report was noted.</li> </ul> <p>The Chairman thanked all partners for their updates.</p>
27	<p><u>Task Group Reports and Decisions</u></p> <ul style="list-style-type: none"> <li>• The Community Area Transport Group (CAT-G) – nothing to report.</li> <li>• Recycle for Wiltshire – the written report was noted.</li> </ul>
28	<p><u>Wrap Up</u></p> <p>Next meeting: Wednesday 8 November – REME Museum, Lyneham.</p>

06 November 2017

Spatial Planning  
Economic Development and  
Planning  
Wiltshire Council  
County Hall  
Bythesea Road  
Trowbridge  
Wiltshire  
BA14 8JN

Our reference: 171107\_WLPR

Dear Sir/Madam

### **Help shape Wiltshire's plans to 2036: Wiltshire Local Plan Review**

The Council is reviewing the Wiltshire Core Strategy (adopted January 2015), which sets out planning policies for the development and use of land in the county over the period to 2026 and is used in the determination of planning applications. In future communications, this will be referred to as the Wiltshire Local Plan Review.

It is necessary to commence work on the review now to ensure that, in line with Government policy, we maintain an up to date plan for Wiltshire that plans over an appropriate timeframe for the new homes, jobs and infrastructure needed to support Wiltshire's communities while protecting the local environment.

We are seeking your views on the scope of the review and the issues the Council should consider in planning for the period to 2036. The review will involve the preparation of a Joint Spatial Framework with Swindon Borough Council. At this stage, no decisions have been made on the future locations for growth and development.

The following consultation documents have been prepared.

#### **Wiltshire Local Plan Review: Consultation Paper**

The consultation paper sets out the proposed scope of the Wiltshire Local Plan Review. It explains that the new homes, employment land and associated infrastructure needed to support growth over the period 2016 to 2036 are to be addressed in the review. It also considers: where an update of existing Wiltshire Core Strategy development management policies may be needed to ensure their continued consistency with Government national policy; how to consolidate older 'saved' policies from former Wiltshire district council local plans; and new policies to plan positively for town centres in Wiltshire.

## Swindon and Wiltshire Joint Spatial Framework: Issues Paper

The Joint Spatial Framework is being prepared jointly with Swindon Borough Council and will guide the overall pattern of development across the wider area of the two councils, setting out the distribution of new jobs, homes and infrastructure. It will provide evidence to inform the councils' individual local plan reviews. The Issues Paper has been prepared to stimulate discussion early in the plan making process. It invites comments on the proposed methodology, scope and objectives of the Joint Spatial Framework and strategic issues in the proposed housing market areas. It is supported by profiles of the proposed new housing market areas at Chippenham, Salisbury, Swindon and Trowbridge. The document includes specific questions on which the Council would like to hear your views.

The Council is also inviting representations on a **draft Sustainability Appraisal Scoping Report**. This proposes a Sustainability Appraisal Framework, including objectives and decision aiding questions, to be used in the assessment of draft policies and proposals as part of the plan making process.

### How to comment

The consultation runs from **9:00am on Tuesday 7 November 2017 until 5:00pm on Tuesday 19 December 2017**.

All the consultation documents and supporting evidence are available on this link:  
<http://www.wiltshire.gov.uk/planning-policy-local-plan-review>

Copies of the consultation documents can also be viewed during normal opening hours at the Council's main offices at Monkton Park (Chippenham), Bourne Hill (Salisbury), County Hall (Trowbridge) and at all Wiltshire Council libraries.

Comments can be returned via the following means:

- Online via the Council's dedicated consultation portal:  
[http://consult.wiltshire.gov.uk/portal/spatial\\_planning](http://consult.wiltshire.gov.uk/portal/spatial_planning)
- By email using the representation form available on the web site and returned to [spatialplanningpolicy@wiltshire.gov.uk](mailto:spatialplanningpolicy@wiltshire.gov.uk); or
- By post in writing to: Spatial Planning, Economic Development & Planning, Wiltshire Council, County Hall, Bythesea Road, Trowbridge, Wiltshire, BA14 8JN.

Should you require further information please phone spatial planning on 01225 713223 or email [spatialplanningpolicy@wiltshire.gov.uk](mailto:spatialplanningpolicy@wiltshire.gov.uk)

Yours faithfully



Georgina Clampitt-Dix  
Head of Spatial Planning  
Economic Development and Planning  
Wiltshire Council



## Royal Wootton Bassett and Cricklade Community Identified Priorities Newsletter. November 2017

### Children and Young People

### RWB and Cricklade Community Area

#### What has been done so far:

1. A **mental health themed 'takeover'** of the Area Board meeting is planned for January 10<sup>th</sup> 2018 at 7.00pm at RWB rugby football club - save the date and spread the word to help beat the Winter blues, spot the signs that someone might be struggling and learn tools to develop personal resilience.

#### Priorities November 2016

1. Mental and emotional health (65.12%)
2. Educational attainment (63.95%)
3. Positive leisure time activities (55.81%)

1. Evaluation of the **Launch 2 Learning** filming project funded by the Area Board to address **cyber-bullying and self-esteem issues** is with an independent assessor and feedback on the project will be presented at the January Area Board meeting.
2. Working with Public Health, a new offer to help schools **'Beat the Bugs'** and so reduce school absence is available to local primary schools. Please contact you CEM if your primary school is interested.
2. Last month we held the first **Apprenticeships Fair** in RWB, bringing together potential apprentices, local businesses and third party providers to help raise aspirations:  
<http://www.businessbiscuit.com/8-news/4491-apprenticeship-fair>

The event went well and feedback was good, especially from the local Academy students who appreciated hearing first-hand from some very inspiring apprentices! Organised in partnership with Jolyon Rose from the Manor House Enterprise Centre, the event was supported by local organisations and businesses including Wiltshire College, Swindon College, the REME Corps Engagement Team and Imagine Cruising. A big thank you to all involved!

Below is a picture of the networking session:





**Royal Wootton Bassett and Cricklade Community Identified Priorities Newsletter. November 2017**

**Community Safety**

**RWB and Cricklade Community Area**

**What has been done so far:**

1. With **Halloween** just around the corner, the Area Board supports Wiltshire Police's campaign to prevent anti-social behaviour at this time of year. You can download a No Trick or Treat poster via the link below to stop unwanted visitors:

<http://www.wiltshire.police.uk/information/documents/campaigns/802-no-trick-or-treat-halloween-poster-2017>

1. **CMAS** have been commissioned and briefed to address ASB in Cricklade, initially through street based youth work.

Cllr Bob Jones has held a local action meeting with Cricklade Town Council, Wiltshire Police, GreenSquare housing and the Youth Offending Team to work together to share intelligence and address ASB in Cricklade.

A community grant has been awarded to GreenSquare to put on skate sessions for young people in Cricklade, to build engagement with young people living in the town. The sessions were at times attended by local PCSOs to develop relationships and build trust between young people and the police.

Preventative work is being delivered by CMAS in Lyneham and RWB through the successful youth groups, each attracting circa 30 young people, with PCSOs also dropping in to the youth groups.

A community grant has been awarded to Cricklade leisure centre for **CCTV install** to monitor users of the centre.

1. Purton is experiencing ASB at the Village Centre late at night. Cllr Jacqui Lay has just raised this with teams at WC who are just starting the process of working with other partners to deal with this issue. A **community grant** has been submitted for CCTV install at the village centre community facility.
2. The Community Area Transport Group continues to work towards making highways improvements, (please see CATG report).

Dorset & Wilts Fire and Rescue Service have launched a new campaign targeted at parking which makes it impossible for appliances to get through to an emergency.

3. The Victim Support service has been promoted via the health and wellbeing group, posters and social media. Please find out more here: <https://www.victimsupport.org.uk/>

**Priorities November 2016**

1. Anti-social behaviour (70.59%)
2. Highway safety (63.53%)
3. Domestic violence (50.59%)





**Royal Wootton Bassett and Cricklade Community Identified Priorities Newsletter. November 2017**

**Culture** **RWB and Cricklade Community Area**

**What has been done so far:**

1. The first **Celebrating Age** will be held on Tuesday 28<sup>th</sup> November at Lyneham Village Hall 'Around the World in 80 Days' will be performed by Angela Laverick, complete with audience participation and followed by a fish and chips lunch for the 3M's memory group. This will be the start of a monthly programme of cultural events brought into the local area funded mainly by the Arts Council. Events will initially be free of charge, targeted towards celebrating older people and move venues around the whole community area.

**Priorities November 2016**

1. Affordable access to cultural activities (73.26%)
2. Library use (58.14%)
3. Diversity and social inclusion (58.14%)

Hear more from Rebecca Seymour, project development worker from Wiltshire Music Centre, at November's Area Board.

1. **Cantantini Choir** is growing into a Sunday afternoon music youth group at St Barts' Church and the Croft Café, for rehearsal and refreshment space. Cantantini restarts on Sunday 1st October, from 5.00-6.30pm, costing £5 per child/session, with a funding scheme for children in case of hardship.
1. A **Community Asset List** has been put together to allow community groups, charities and town and parish councils to share their assets locally. The Our Community Matters website is soon to be updated and once this piece of work is complete, the asset list will be available to all from the website. If you have an asset which you are willing to share, please get in touch: [alexa.davies@wiltshire.gov.uk](mailto:alexa.davies@wiltshire.gov.uk), 01249 706610.
2. Plans continue to develop for investment into RWB library to become **Royal Wootton Bassett Community Hub and Library**, in line with the Calne model and working in partnership with RWB Town Council.

Early conversations have been held with a wide range of partners for wider use of the community hub and library, which will include meeting rooms for the town which groups will be able to hire. Please get in touch using the contact details above if you are a community group interested in using the new community hub, we would love to hear from you and the space is already in demand! Your CEM has been working with colleagues in Calne, Corsham and Devizes to find out what is working well in the community hub spaces which are already open and to learn what could be brought into Royal Wootton Bassett.





**Royal Wootton Bassett and Cricklade Community Identified Priorities Newsletter. November 2017**

**Economy**

**RWB and Cricklade Community Area**

**What has been done so far:**

1. Please see Children and Young People theme for an update on **Bassett Apprenticeships Fair**.
2. **Improving opportunities for ex-military personnel** through training and skills is an area which John Stanwix from Support Empower Advocate Promote (SEAP) military advocacy will be helping to address locally. John is at the networking session for the November Area Board meeting, so please find him to learn more about the service he offers in the community area. SEAP are interested in holding sessions in the RWB community hub and library once it is ready in the New Year.

**Priorities November 2016**

1. Apprenticeship and work experience (71.43%)
2. Training and skills (70.24%)
3. Broadband and digital (52.38%)

2. Your CEM is working with TEN4Biz to put together an exciting and inspiring programme for Swindon & Wiltshire's **Women in Business Conference 2018**. We're bringing together entrepreneurs and businesswomen from across the south west - and we reach many more through the media, blogs and [videos](#). Next year's focus will be innovation and creativity, offering a great opportunity for businesswomen to learn, reach out and connect. The event is back at the fabulous Bowood Estate, once more celebrating International Women's Day on Thursday 8<sup>th</sup> March, save the date!
2. **Learndirect** will hopefully be a partner in the new community hub, providing **FREE training courses** to support **over 50s** developing digital skills to help them re-enter the workplace.
3. The **WithIT** group continues, with help from Cllr Allison Bucknell, at the **RWB library on Mondays 10-11**. Drop in to receive free help with learning to best use your device.

A friendly group of **Cricklade digi-champions** meet in the Cricklade leisure centre cafe **every Monday between 10 and 12 noon** and are happy to help and support anyone from the community area who is struggling to get to grips with their technology. Why not pop along to see if they can help you? Of course, if you are a whizz with technology, perhaps you could support others to learn? Drop in to find out more.

3. The Wiltshire Online programme continues to make good progress. See here for more information: <http://www.wiltshireonline.org/>

Picture from last year's Women in Business Conference 2017:







**Royal Wootton Bassett and Cricklade Community Identified Priorities Newsletter. November 2017**

**Environment RWB and Cricklade Community Area**

**What has been done so far:**

1. RWB&C is working well with the **Wiltshire Wildlife Trust** to run a campaign to reduce litter across the community area and encourage people to reduce their waste and re-use materials where possible - see their written report to find out more about their **Campaign Plan**, including dates for your diary and how you can get involved.

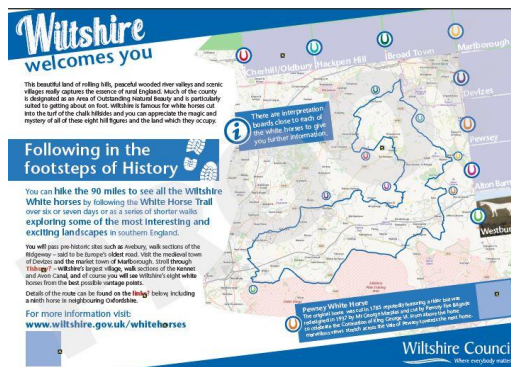
**Priorities November 2016**

1. Fly tipping and litter (74.12%)
2. Improving rights of way (42.35%)
3. Protecting the countryside (36.47%)

1. Are you a town or parish council who would like to **reduce chewing gum** litter on your patch? Please contact your CEM for free promotional material for this national Chewing Gum Action Group campaign.
2. Existing interpretation boards for Wiltshire’s White Horses are soon to be replaced across the county, pending agreement by local Area Boards. The signs will be updated with QR codes with links to further information about the Horses and the White Horse Trail (a walking route which links them together), audio and braille, to make the information available to more people and to encourage people to explore our beautiful county! Please find a draft of a new sign below.
3. Active community groups who have received community grant funding continue to make good progress improving rights of way, including the Purton Volunteers Footpath Group and Cricklade Dance Common.

A number of our town and parish councils have expressed their interest in the **WW1 tree planting legacy project**, thank you for all your support.

Area Board councillors were also asked to take a view on having a central commemorative woodland in addition to the local planting. The councillors expressed their support in principle providing the trees are properly maintained (so the woodland would have to be owned by a properly constituted body) and a desire that any new woodland will be where there isn’t already woodland, but where planting is needed to join up corridors for wildlife.





## Royal Wootton Bassett and Cricklade Community Identified Priorities Newsletter. November 2017

### Health, Wellbeing and Leisure

### RWB and Cricklade Community Area

#### What has been done so far:

1. Would you be interested in getting involved with a therapy garden to help those in need, like the TWIGS Community Gardens in Swindon? Please contact Alexa Davies as your CEM if you would like to register your interest. Find out more about TWIGS here: <http://www.twigscommunitygardens.org.uk/>

#### Priorities November 2016

1. Mental health (75.29%)
2. Healthy lifestyles (68.24%)
3. Support for carers (61.18%)

2. Area Board funding is being used to support primary schools across the community area to become accredited Healthy Schools. The following schools are currently **Wiltshire Healthy Schools**:

Royal Wootton Bassett Academy (bronze until October 2019) and St Sampson's CE Primary School (bronze until April 2020)

The following schools are currently working towards meeting the standards or the next level:

St Mary's CofE Primary School Purton (joined May 2017 and are working towards bronze level)

St Sampson's CE Primary School (currently bronze, now working towards silver level since June 2017)

The following schools have booked a place on the next Healthy Schools training in November 2017

Longleaze Primary School (previously silver from October 2014 - October 2016)

Lyneham Primary School (previously silver from April 2015 - April 2017)

Noremarsch Community Junior School

2. **Wiltshire Council health trainer, Janice Bardwell**, continues to deliver information, encouragement and advice to anyone looking to improve their health. **Drop into the library on a Wednesday morning to meet Jan.**

**Seated Sports (previously called Fit for Life)** - sports development officer Matt Pearson will launch Seated Sports in RWB for those aged 60+ in the New Year. This will start at RWB Memorial Hall (pending councillor agreement of funds for hall hire) and then move into the community hub longer term, where sessions will be led by a volunteer who has already come forwards! The sessions have support from the 3M's memory group attendees and will start with seated boccia.

3. A successful **Health & Wellbeing Group** has been established, bringing together the Area Board, local GP surgeries, leisure centres and third parties to share information and develop the health and wellbeing network. Zoe Millington from WSUN is part of the health and wellbeing group and Zoe is currently mapping and gapping support for carers as part of her role.



## Royal Wootton Bassett and Cricklade Community Identified Priorities Newsletter. November 2017

### Older People

### RWB and Cricklade Community Area

#### What has been done so far:

1. **Ellen Blacker** has been appointed the Health & Wellbeing Champion for our community area for a second year. Working mainly with RWB&C's elderly and most vulnerable residents, Ellen also chairs the Health & Wellbeing Group. A Sunday Lunch Club has been set up at The Wiltshire for those who would otherwise be on their own on this day – 07557 922020, [ellen.blacker@wiltshire.gov.uk](mailto:ellen.blacker@wiltshire.gov.uk).

#### Priorities November 2016

1. Social isolation and loneliness (80%)
2. Support for carers (57.65%)
3. Dementia (54.12%)

You are invited to attend an interactive meeting to discuss adult social care with the team from Wiltshire Council. Your local meeting will be on Wednesday 1<sup>st</sup> November at 2.00pm at the Manor House Enterprise Centre, RWB.

We are particularly interested in hearing from:

People who use adult care services

Carers

People/organisations/services involved in supporting local people with their general wellbeing or social care needs.

All welcome, please register your attendance with Alexa Davies; 01249 706610 / [alexa.davies@wiltshire.gov.uk](mailto:alexa.davies@wiltshire.gov.uk).

A GP hosted tea party is taking place at Tinkers Lane surgery to help with social isolation.

#### 3. **Safe Places and Dementia Friends**

The Caring about Dementia group met on 6<sup>th</sup> October and made plans to help the community area to become more dementia friendly. These included putting together an annual offer of Dementia Friends sessions for schools and community groups with a regular turn over, such as the Guides. The group have visited Bassett House care home to work more closely together and learn more about local needs. A local WI group have already started knitting dementia twiddle-muffs to help soothe people living in the home, thank you ☺

The number of Dementia Friends is building across the community area, Purton Parish Council are fully championing this cause and have recently made 23 new Dementia Friends and appointed a lead councillor. Dementia Friends sessions are scheduled for; RWB Town Council, friends and family at Bassett House care home and more. Please get in touch if you would be interested in hosting a short information session for your community group.





Royal Wootton Bassett and Cricklade Community Identified Priorities Newsletter. November 2017

Transport RWB and Cricklade Community Area

What has been done so far:

1. The **Community Area Transport Group** agrees funding for road safety improvements - currently projects include a new footway in Purton, work around North Wall in Cricklade and more. There are 4/5 schemes that CATG can consider at any one time, please see the CATG report in the agenda pack.
  
3. The community area is lucky enough to have a **community MPV** which is available for community groups to use free of charge, subject to driver checks and registration. The vehicle is based at Lime Kiln in Royal Wootton Bassett and is already used by the local GP surgeries, Duke of Edinburgh Open Award Centre and the 3M's memory group in Lyneham. Please contact your Community Engagement Manager, alexa.davies@wiltshire.gov.uk, 01249 706610 if you would like to use this vehicle.

**Priorities November 2016**

1. Road improvement (81.18%)
2. Speeding and road safety (69.41%)
3. Access to public transport (65.88%)



There are a number of local LINK schemes and the Purton Age Concern bus is also available locally – they are seeking a community grant towards a replacement bus.. **Bradies Connect** timetables are now available from the Area Board section of the RWB library (at the back near the computers at present).

\*\*\*\*\***SHOUT OUT**\*\*\*\*\*

*The 3Ms memory group continues to go well and numbers are very good. The group is desperate to find an occasional driver for when their main driver is on holiday. The driving is very straightforward but the driver does need to be very aware of people needing help with accessing the vehicle and securing seat belts etc.*

*Please contact Zoe Millington if you can help:  
zoemillington.wsun@btconnect.com*



## Royal Wootton Bassett and Cricklade Community Identified Priorities Newsletter. November 2017

### Housing

### RWB and Cricklade Community Area

#### What has been done so far:

1. The neighbourhood planning process is supported by Wiltshire Council.
2. The Area Board is working closely with **GreenSquare** Housing as the largest local housing association to help address the issues they face. Work has commenced on a major GreenSquare redevelopment project bringing forward more affordable housing at Culverhay, Cricklade. GreenSquare sit on the Health & Wellbeing Group. Commitment to the RWB&C Child Poverty Action Plan (as presented at the 20.07.16 Area Board meeting) is ongoing.
3. **Superfast Broadband continues to be rolled out across the county.**

#### Priorities November 2016

1. **Affordable housing (88.24%)**
2. **Deprivation and poverty (64.71%)**
3. **Digital engagement and broadband (48.24%)**



**Royal Wootton Bassett and Cricklade Community Identified Priorities Newsletter. November 2017**

**LINKS TO USEFUL INFORMATION:**

[WILTSHIRE INFORMATION NETWORK](#)

[WILTSHIRE JSA NETWORK](#) website

[ROYAL WOOTTON BASSETT & CRICKLADE AREA BOARD JSA report 2016-18](#)

**RWB & C Project Bank – soon to be available on the revised ‘Our Community Matters’ website:**

<http://rwbc.ourcommunitymatters.org.uk/>

***For regular updates from the RWB&C Area Board ...***

*Follow us on Twitter - @RWBandCCEM*

*Facebook – Royal Wootton Bassett and Cricklade Area Board (Page)*

***AND*** sign up to *Our Community Matters* for your weekly *Royal Wootton Bassett and Cricklade local newsletter*: [here](#), we would love to hear from you.



**Royal Wootton Bassett and Cricklade  
Investing in our Communities Newsletter  
NOVEMBER 2017**

- Please note, all figures are subject to confirmation with our Finance team and as such must be treated as provisional.

	2017-18 allocation	Invested to date	Available for investment	Amount leveraged
<b>GENERAL CAPITAL GRANTS</b>	46,555	12,468.43	34,086.57	Tbc end of financial year
<b>COMMUNITY AREA TRANSPORT GROUP (CATG)</b>	22,728	8,293	14,435	Tbc end of financial year
<b>YOUTH GRANTS</b>	21,235	20,603.70	631.30	N/a
<b>HEALTH &amp; WELLBEING / OLDER PERSON CHAMPION</b>	7,700	7,700	Budget committed to appointment of Health & Wellbeing/ Older Person's Champion, Ellen Blacker	Tbc end of financial year

**NEW GRANT APPLICATIONS NOVEMBER 2017**

<b>GENERAL GRANTS</b>	<b>Amount requested</b>	<b>Total project amount</b>
<p><b>Broad Town WI - seeking £945.00 towards purchase and installation of a defibrillator on the outside of Broad Town Village Hall.</b></p> <p>Please view application here:  <a href="http://thematrix.wiltshire.council/areaboard_grants/grant_get.php?gid=2540">http://thematrix.wiltshire.council/areaboard_grants/grant_get.php?gid=2540</a></p>	<b>£945.00</b>	<b>£1995.00</b>
<p><b>Purton Parish Council - seeking £4,612.50 towards ANPR and close circuit CCTV system at Purton Village Centre community facility.</b></p> <p>Please view application here:  <a href="http://thematrix.wiltshire.council/areaboard_grants/grant_get.php?gid=2543">http://thematrix.wiltshire.council/areaboard_grants/grant_get.php?gid=2543</a></p>	<b>£4612.50</b>	<b>£9225.00</b>
<p><b>Marston Meysey Village Hall Association - seeking £5,000 towards replacement of the village hall roof.</b></p>	<b>£5,000.00</b>	<b>£24,300.00</b>



**Royal Wootton Bassett and Cricklade  
Investing in our Communities Newsletter  
NOVEMBER 2017**

<p><b>Please view application here:</b> <a href="http://thematrix.wiltshire.council/areaboard_grants/grant_get.php?gid=2565">http://thematrix.wiltshire.council/areaboard_grants/grant_get.php?gid=2565</a></p>		
<p><b>Purton and District Age Concern – seeking £5,000 for a new specialised minibus.</b></p>	<b>£5,000</b>	<b>£40,000</b>
<p><b>Please view application here:</b> <a href="http://thematrix.wiltshire.council/areaboard_grants/grant_get.php?gid=2590">http://thematrix.wiltshire.council/areaboard_grants/grant_get.php?gid=2590</a></p>		
<p><b>Wiltshire and Berkshire Canal Trust – seeking £2,178.00 for finger posts and a mower for the Studley Grange site.</b></p>	<b>£2178.00</b>	<b>£18,185.00</b>
<p><b>Please view application here:</b> <a href="http://thematrix.wiltshire.council/areaboard_grants/grant_get.php?gid=2591">http://thematrix.wiltshire.council/areaboard_grants/grant_get.php?gid=2591</a></p>		
<p><b>Cricklade leisure centre – seeking £1,346.00 towards a defibrillator to be sited outside the leisure centre.</b></p>	<b>£1,346.00</b>	<b>£2692.00</b>
<p><b>Please view application here:</b> <a href="http://services.wiltshire.gov.uk/areaboardgrants/grant_detail.php?gid=2568">http://services.wiltshire.gov.uk/areaboardgrants/grant_detail.php?gid=2568</a></p>		
<p><b>Area Board initiative: £390.00 for 13 weeks Royal Wootton Bassett Memorial Hall hire @ £30 a session for new Seated Sports provision.</b></p>	<b>£390.00</b>	

<b>COMMUNITY AREA TRANSPORT GROUP (CATG)</b>	<b>Amount requested</b>	<b>Total project amount</b>
Please see separate CATG report.		





**Royal Wootton Bassett and Cricklade  
Investing in our Communities Newsletter  
NOVEMBER 2017**

**GENERAL GRANTS/CLLR INITIATIVES UPDATE 2017-18**

<b>Meeting/Organisation</b>	<b>Amount requested</b>	<b>Total project amount</b>
<b>September 2017</b>		
Purton Historical Society - £834.00 for a new Brockhurst Meadow information board.	<b>£834.00</b>	<b>£834.00</b>
<b>July 2017</b>		
Cricklade Camera Club - new laptop and projector equipment for the club	<b>£987.00</b>	<b>£987.00</b>
Purton War Memorial and Village Centre Charity - a new pedestrian safety gate	<b>£807.00</b>	<b>£1614.00</b>
<b>May 2017</b>		
Dance Common Management Group - reinstatement of stone wall for Cricklade Bloomers	<b>5,000.00</b>	<b>18,575.00</b>
The Cricklade Festival - signage for Cricklade festival and similar events	<b>1,000.00</b>	<b>350.00</b>
Tockenham Village Fair - trestle tables	<b>998.40</b>	<b>998.40</b>
The Cricklade Band - new storage facility	<b>992.03</b>	<b>992.03</b>
Thames Pre-School - equipment to develop Forest School	<b>350.00</b>	<b>350.00</b>
Celebrating Age (Cllr initiative)	<b>1,500</b>	<b>65,000</b>



**Royal Wootton Bassett and Cricklade  
Investing in our Communities Newsletter  
NOVEMBER 2017**

*PIPs kitchen is looking good in Purton, with help from a community grant from the Royal Wootton Bassett & Cricklade Area Board!*

*The new kitchen is painted and base units fitted. A fantastic volunteer is also converting a cupboard in the Purton Club Function Room into a wheelchair accessible toilet.*



**YOUTH GRANTS/COUNCILLOR INITIATIVES UPDATE 2017-18**

<b>May 2017</b>	<b>Amount requested</b>	<b>Total project amount</b>
GreenSquare - Cricklade Skate Scoot BMX session	<b>1,050.00</b>	<b>1,600.00</b>
Cricklade Youth Provision Proposal (CMAS) - to provide the structure and support for Cricklade youth provision from June 2017 to June 2018, for 46 weeks of the year.	<b>10,750.00</b>	<b>10,750.00</b>
H5 Adventure days for 200 young people – joint with RWB Mayor's charity	<b>3,000.00</b>	<b>6,000.00</b>
Fun in the Sun - venue hire for rural sports programme in Purton	<b>200.00</b>	<b>Tbc</b>
Support for Healthy Schools	<b>Tbc - as dependent on the number of schools taking part = £1,860</b>	<b>Tbc based on current take up 6 schools x £310 = £1,860, registration closes Oct 2017</b>
Launch 2 Learning - extension of project to Cricklade and Purton	<b>3743.70</b>	<b>3,743.70</b>



**Royal Wootton Bassett and Cricklade  
Investing in our Communities Newsletter  
NOVEMBER 2017**

**USEFUL LINKS**

Area Boards have authority to approve grants under powers delegated to them. Under the Scheme of Delegation Area Boards must adhere to the [Area Board Grants Guidance](#)

The community grant funding criteria and application forms are available on Wiltshire Council's website: [here](#).

Further information about the Community Area Transport Group (CATG) and youth grants can be found by clicking on the following links:

[Community Area Transport Group](#)  
[Youth Grants](#).





## **Cricklade, Purton and Royal Wootton Bassett Community Policing Team Update**



Hello and welcome to this Community Policing Team report.

The purpose of these reports is to provide a short summary of the local issues in your area. Engaging with the public is vital for us as. Not only does it give us an opportunity to share what we are doing and keep our communities informed and up to date but it also provides an opportunity for our communities to feed back to us; what we're doing well, where we can make improvements and how we can work together to tackle local issues.

We hope you find these updates useful, for the latest news, crime prevention advice and appeals please follow us on:

Twitter <https://twitter.com/wiltshirepolice>

Facebook <https://www.facebook.com/wiltshirepolice/>

Or sign up to Community Messaging <https://www.wiltsmessaging.co.uk/>

Thank you for your continued support to Wiltshire Police.

## **Crimes that have an impact on the community reported between 22nd September 2017 and 29th October 2017**

There is an excellent website where crimes for an area can be mapped the link to it is here

[UK Crime figures](#)

I am therefore only including details of burglaries or any series of crimes that have occurred in the area.

- ◇ Between 21:30 on the 24th September and 08:00 on the 25th September Unknown suspects have smashed the back window of an address on the High Street, Cricklade however nothing was taken.
- ◇ Between Midnight on the 27th September and 06:00 on 28th September unknown suspects have attempted to force entry to an address on Melsome Road, Lyneham. Entry wasn't gained and nothing taken.
- ◇ Between 15:00 on 30th September and 06:00 on 2nd October unknown suspects have forced entry to a Butchers in Purton, Stolen £10 in cash and a quantity of meat.
- ◇ Between 15:00 on 2nd October and 09:00 on the 4th October unknown suspects have forced entry to a garage at a property on Reids Piece, Purton however nothing was taken.
- ◇ Between 19:00 on 17/10/17 and 08:00 on 18/10/17 unknown suspects have forced entry to a shed located at a property on Common Platt, Purton and stolen a quantity of tools.
- ◇ Between 21:00 on the 17th October and 15:40 on the 18th October unknown suspects have forced entry to a unit in Common Hill, Cricklade then have stolen Fuel and Weed Killer.
- ◇ Between 16:30 on the 23rd October and 11:00 on the 24th October unknown suspects have gained entry to a garage of a house under construction at Common Platt, Purton and stolen a Diesel fuelled generator.
- ◇ Between Midnight on 30th September and Midnight on the 21st October unknown suspects have gained entry to an industrial unit on the Marlborough Road and stolen batteries and Diesel fuel from a number of vehicles.
- ◇ At 21:24 hours on the 25th October unknown suspects have forced entry to an address at Longleaze in Wootton Bassett and stolen various items including Jewellery.
- ◇ Between 08:00 on the 23rd October and 12:00 on 26th October unknown suspects have forced entry to an address on Longleaze, Royal Wootton Bassett, searched the address but not stolen anything.
- ◇ Between 19:15 and 20:35 on the 25th October unknown suspects have forced entry to an address at Spratts Barn Crescent, Royal Wootton Bassett and stolen 2 x floor safe's containing various items.

If you have any information on the above or any other incidents/crimes then please call 101.

You could go to prison for up to 4 years, even if its not used.

[#StopKnifeCrime](#)

Further information and support can be found at [www.wiltshire.police.uk/index.php/youthzone](http://www.wiltshire.police.uk/index.php/youthzone) or to report a crime anonymously visit [www.fearless.org](http://www.fearless.org)



**If there is a knife in your child's hand, it's up to you to stop it.**

If you have information on those who carry knives or offensive weapons always call 999 in an emergency or 101 at other times



[#StopKnifeCrime](#)

**It is illegal to carry a knife, blade/sharp-point or offensive weapon in a public place**

If you have information on those who carry knives or offensive weapons always call 999 in an emergency or 101 at other times



[#StopKnifeCrime](#)

## Local Priorities

Since the Community Policing Team Model rolled out, we have been setting the local area priorities in a more fluid way. The priorities, in the most simplistic form, are what officers are expected to be doing, and where they should be patrolling, when they are not responding to ongoing crimes or incidents, or not carrying out enquiries relating to those crimes and incidents.

The priorities are set every two weeks and may be long term or short term. They are decided upon by Police Sergeant and Inspector using various information including:

- the views and concerns of the public expressed at area board and other public meetings.
- reviewing crime reports to enable the identification of crime series or identification of prolific offenders.
- reviewing logs of calls created by the control room that often highlight problems with antisocial behaviour, speeding, dangerous driving etc. that impact the community in a detrimental way.
- evaluating information received from the Police Community Support Officers and the Community Coordinator, who assist with identifying local issues and working on medium to long term issues for the community.
- the input of the team sergeants who supervise the PCs in the sector and allocate and manage crimes and incidents as they are reported.
- various other departments can also add to this picture such as intelligence units and crime analysts.

The force control strategy is also used to evaluate the priorities considering threat, harm and risk.

The priorities for the whole of this Community Policing Team i.e. Royal Wootton Bassett and Cricklade have between July and September included :

- ◇ Proactive work and community engagement over ongoing ASB incidents in the Royal Wootton Bassett Area.
- ◇ Engagement with Licensed premises including regular checks to help reduce the chances of alcohol related issues.





**The link below is for Community Messaging. The Community Coordinator for this area sends out a daily message, if there has been any crime that will benefit the community to be aware of. This includes thefts, scams and burglaries, the aim is to inform you of what is happening in your area, help you take any actions to avoid becoming a victim of crime and to alert you as a potential witness to any crime. Its easy to sign up and only messages, relevant to your area, are sent to your email inbox.**

<https://www.wiltsmessaging.co.uk/>

The email address for the Wiltshire North Community Policing team is  
northwiltshirecpt@wiltshire.police.uk  
Please phone 101, or 999 in an emergency to report any incidents or  
crimes

This report has been prepared by PC 2608 Stuart Welch





## Royal Wootton Bassett and Cricklade Area Board – Report for 8<sup>th</sup> November 2017

### Community Engagement

Cricklade fire station continues to support the Fire Cadets and this section has been one of the longest standing cadet sections on the organisation.

RWB (and Cricklade Fire Station) will be joining the rest of the Organisation in taking part in our campaign to highlight the problem caused by the parking of vehicles that impede or delay Emergency Services from getting to their destination. The campaign will go live in Wiltshire & Swindon on Monday 13<sup>th</sup> November and titled 'Are We Getting Through'. This will have a high local media interest and already some areas in Lynham have been highlighted as an issue for the Fire Service. RWB station will be undertaking a drive around the Military Estates and handing out leaflets which show the problem we can face.

Attached is an overview of the leaflet to promote our campaign.

We continue to offer our Safe & Well visits and if you (or someone you know) needs a smoke alarm, some advice or are worried about what you would do in an emergency, contact us at; <http://www.dwfire.org.uk/safety/safe-and-well-visits/>

### Response

#### **Total Fire Calls for Cricklade Fire station; 19/09/2017 – 25/10/2017**

Category	Callsign	Total Incidents
False Alarm	52P1	2
Fire	52P1	1
Other	52P1	1
Special Service	52P1	1
<b>Total</b>	<b>52P1</b>	<b>5</b>

**Other** – This can be a movement to another fire station to provide fire cover during an ongoing incident

#### **Availability of On-Call appliance 52P1;**

Appliance	Day (06:00 - 18:00)	Night (18:00 - 06:00)	Total
52P1	52.62%	86.90%	69.76%



**Total Fire Calls for RWB Fire station; 19/09/2017 – 25/10/2017**

Category	Callsign	Total Incidents
False Alarm	56P1	8
Fire	56P1	3
Other	56P1	1
Special Service	56P1	6
<b>Total</b>	<b>56P1</b>	<b>18</b>

**Other** – This can be a movement to another fire station to provide fire cover during an ongoing incident

**Availability of On-Call appliance 56P1;**

Appliance	Day (06:00 - 18:00)	Night (18:00 - 06:00)	Total
56P1	60.12%	97.02%	78.57%

**On-Call Recruitment**

As the Availability tables show, crewing of appliances during the day is problematic for us due to the lack of personnel available during these times. We continue to strive and improve on the number of personnel at each station through our recruitment process so as we can increase the amount of hours our appliances are available for call outs. Currently we have 2 personnel at Cricklade allocated to a training course in December and a number of people who are within the recruitment process at RWB. Once these courses have been completed, we hope to see an improvement to the hours our appliances are available to respond in the community.

**Recent Notable Incidents**

Cricklade have attended a significant Road Traffic Collision on the A4319 which resulted in several casualties with a variety of injuries. Both Cricklade and RWB attended a fire in Swindon which resulted in the attendance of a further 6 fire appliances, a high reach platform and also a command Unit.

**Community Safety Plan**

Our Community Safety Plan is our vision until 2020 and can be found on the DWFRS website; <http://www.dwfire.org.uk/community-safety-plan/>

Matty Maggs

District Commander, Marlborough, Ramsbury, Cricklade and RWB

Email: [Matthew.maggs@dwfire.org.uk](mailto:Matthew.maggs@dwfire.org.uk)

Tel: 01722 691173 | Mobile: 07595 966708



IN STREETS LIKE THESE, **THOUGHTLESS PARKING** CAN PREVENT FIRE ENGINES GETTING THROUGH.....



DORSET & WILTSHIRE  
FIRE AND RESCUE

Vehicle:.....

Date:.....

Location:.....

Time:.....

Note: If the details of this vehicle are recorded on multiple occasions, they may be passed to the police for further consideration.

# EVERY SECOND COUNTS WHEN FIREFIGHTERS ARE RESPONDING TO A 999 CALL. TIME SPENT TRYING TO SQUEEZE BETWEEN PARKED CARS COULD PUT LIVES AT RISK.

- Please don't park too close to corners – fire engines are larger than cars and need more room to turn corners
- If you are parking opposite someone, remember that a fire engine needs at least two car widths to fit through
- Make sure your wheels are straight when you have finished parking your vehicle
- Always follow the highway code (Section 217; parking of vehicles)

**THINK** – it could be you, your family, friends, colleagues or neighbours that we can't get to.

[dwfire.org.uk](http://dwfire.org.uk)

PASSIONATE ABOUT

CHANGING & SAVING LIVES



## Royal Wootton Bassett and Cricklade Investing in our Communities Newsletter NOVEMBER 2017

- Please note, all figures are subject to confirmation with our Finance team and as such must be treated as provisional.

	2017-18 allocation	Invested to date	Available for investment	Amount leveraged
<b>GENERAL CAPITAL GRANTS</b>	46,555	12,468.43	34,086.57	Tbc end of financial year
<b>COMMUNITY AREA TRANSPORT GROUP (CATG)</b>	22,728	8,293	14,435	Tbc end of financial year
<b>YOUTH GRANTS</b>	21,235	20,603.70	631.30	N/a
<b>HEALTH &amp; WELLBEING / OLDER PERSON CHAMPION</b>	7,700	7,700	Budget committed to appointment of Health & Wellbeing/ Older Person's Champion, Ellen Blacker	Tbc end of financial year

## NEW GRANT APPLICATIONS NOVEMBER 2017

<b>GENERAL GRANTS</b>	<b>Amount requested</b>	<b>Total project amount</b>
<p><b>Broad Town WI - seeking £945.00 towards purchase and installation of a defibrillator on the outside of Broad Town Village Hall.</b></p> <p>Please view application here:  <a href="http://thematrix.wiltshire.council/areaboard_grants/grant_get.php?gid=2540">http://thematrix.wiltshire.council/areaboard_grants/grant_get.php?gid=2540</a></p>	<b>£945.00</b>	<b>£1995.00</b>
<p><b>Purton Parish Council - seeking £4,612.50 towards ANPR and close circuit CCTV system at Purton Village Centre community facility.</b></p> <p>Please view application here:  <a href="http://thematrix.wiltshire.council/areaboard_grants/grant_get.php?gid=2543">http://thematrix.wiltshire.council/areaboard_grants/grant_get.php?gid=2543</a></p>	<b>£4612.50</b>	<b>£9225.00</b>
<p><b>Marston Meysey Village Hall Association - seeking £5,000 towards replacement of the village hall roof.</b></p>	<b>£5,000.00</b>	<b>£24,300.00</b>



**Royal Wootton Bassett and Cricklade  
Investing in our Communities Newsletter  
NOVEMBER 2017**

<p><b>Please view application here:</b>  <a href="http://thematrix.wiltshire.council/areaboard_grants/grant_get.php?gid=2565">http://thematrix.wiltshire.council/areaboard_grants/grant_get.php?gid=2565</a></p>		
<p><b>Purton and District Age Concern – seeking £5,000 for a new specialised minibus.</b></p>	<b>£5,000</b>	<b>£40,000</b>
<p><b>Please view application here:</b>  <a href="http://thematrix.wiltshire.council/areaboard_grants/grant_get.php?gid=2590">http://thematrix.wiltshire.council/areaboard_grants/grant_get.php?gid=2590</a></p>		
<p><b>Wiltshire and Berkshire Canal Trust – seeking £2,178.00 for finger posts and a mower for the Studley Grange site.</b></p>	<b>£2178.00</b>	<b>£18,185.00</b>
<p><b>Please view application here:</b>  <a href="http://thematrix.wiltshire.council/areaboard_grants/grant_get.php?gid=2591">http://thematrix.wiltshire.council/areaboard_grants/grant_get.php?gid=2591</a></p>		
<p><b>Cricklade leisure centre – seeking £1,346.00 towards a defibrillator to be sited outside the leisure centre.</b></p>	<b>£1,346.00</b>	<b>£2692.00</b>
<p><b>Please view application here:</b>  <a href="http://services.wiltshire.gov.uk/areaboardgrants/grant_detail.php?gid=2568">http://services.wiltshire.gov.uk/areaboardgrants/grant_detail.php?gid=2568</a></p>		
<p><b>Area Board initiative: £390.00 for 13 weeks Royal Wootton Bassett Memorial Hall hire @ £30 a session for new Seated Sports provision.</b></p>	<b>£390.00</b>	

<b>COMMUNITY AREA TRANSPORT GROUP (CATG)</b>	<b>Amount requested</b>	<b>Total project amount</b>
Please see separate CATG report.		





**Royal Wootton Bassett and Cricklade  
Investing in our Communities Newsletter  
NOVEMBER 2017**

**GENERAL GRANTS/CLLR INITIATIVES UPDATE 2017-18**

<b>Meeting/Organisation</b>	<b>Amount requested</b>	<b>Total project amount</b>
<b>September 2017</b>		
Purton Historical Society - £834.00 for a new Brockhurst Meadow information board.	<b>£834.00</b>	<b>£834.00</b>
<b>July 2017</b>		
Cricklade Camera Club - new laptop and projector equipment for the club	<b>£987.00</b>	<b>£987.00</b>
Purton War Memorial and Village Centre Charity - a new pedestrian safety gate	<b>£807.00</b>	<b>£1614.00</b>
<b>May 2017</b>		
Dance Common Management Group - reinstatement of stone wall for Cricklade Bloomers	<b>5,000.00</b>	<b>18,575.00</b>
The Cricklade Festival - signage for Cricklade festival and similar events	<b>1,000.00</b>	<b>350.00</b>
Tockenham Village Fair - trestle tables	<b>998.40</b>	<b>998.40</b>
The Cricklade Band - new storage facility	<b>992.03</b>	<b>992.03</b>
Thames Pre-School - equipment to develop Forest School	<b>350.00</b>	<b>350.00</b>
Celebrating Age (Cllr initiative)	<b>1,500</b>	<b>65,000</b>



## Royal Wootton Bassett and Cricklade Investing in our Communities Newsletter NOVEMBER 2017

*PIPs kitchen is looking good in Purton, with help from a community grant from the Royal Wootton Bassett & Cricklade Area Board!*

*The new kitchen is painted and base units fitted. A fantastic volunteer is also converting a cupboard in the Purton Club Function Room into a wheelchair accessible toilet.*



### YOUTH GRANTS/COUNCILLOR INITIATIVES UPDATE 2017-18

May 2017	Amount requested	Total project amount
GreenSquare - Cricklade Skate Scoot BMX session	<b>1,050.00</b>	<b>1,600.00</b>
Cricklade Youth Provision Proposal (CMAS) - to provide the structure and support for Cricklade youth provision from June 2017 to June 2018, for 46 weeks of the year.	<b>10,750.00</b>	<b>10,750.00</b>
H5 Adventure days for 200 young people – joint with RWB Mayor's charity	<b>3,000.00</b>	<b>6,000.00</b>
Fun in the Sun - venue hire for rural sports programme in Purton	<b>200.00</b>	<b>Tbc</b>
Support for Healthy Schools	<b>Tbc - as dependent on the number of schools taking part = £1,860</b>	<b>Tbc based on current take up 6 schools x £310 = £1,860, registration closes Oct 2017</b>
Launch 2 Learning - extension of project to Cricklade and Purton	<b>3743.70</b>	<b>3,743.70</b>



## Royal Wootton Bassett and Cricklade Investing in our Communities Newsletter NOVEMBER 2017

### USEFUL LINKS

Area Boards have authority to approve grants under powers delegated to them. Under the Scheme of Delegation Area Boards must adhere to the [Area Board Grants Guidance](#)

The community grant funding criteria and application forms are available on Wiltshire Council's website: [here](#).

Further information about the Community Area Transport Group (CATG) and youth grants can be found by clicking on the following links:

[Community Area Transport Group](#)  
[Youth Grants](#).



# **Update for Royal Wootton Bassett & Cricklade Area Board**

<b>Update from</b>	<b>Recycle for Wiltshire Joint Venture</b>
<b>Date of Area Board Meeting</b>	8 November 2017

## **Headlines**

- Cricklade Bloomers Grand Opening - On 23 September we joined the Bloomers to promote 'upcycling' unwanted household items in the garden and showed how to make a 'bug hotel' out of household waste. We followed this up with an opportunity to make your own zero-waste bird-feeder at the last Area Board meeting.
- Half-term Halloween events – we had a busy session story-telling and making Halloween crafts out of everyday household rubbish in RWB Library during this week and ran a popular pumpkin carving and soup making session at MOD Lyneham Community Centre to reduce pumpkin waste.
- Our Real Nappy network of volunteers – a couple of who, Tammy and Ellie, are based locally – won Wiltshire Wildlife Trust's Volunteer Group of the Year Award. The scheme gives parents living in Wiltshire the chance to try out cloth nappies at home for free. To find out more information or to trial one of our kits, please contact [Nappies@wiltshirewildlife.org](mailto:Nappies@wiltshirewildlife.org).
- We've been planning some fun sessions to encourage people to reduce waste this Christmas – we'll be running a Toiletries & Gift Sets workshop on 15 November in Cricklade and on 16 November in RWB and a Christmas cards, packaging and decorations workshop on 29 November in Cricklade and on 30 November in RWB.

- 
- We'll be judging the results this week of our 'Drop the Rubbish Attitude' litter campaign competition that Key Stage 3 'Success Lounge' students at the Royal Wootton Bassett Academy have taken part in. RWB Town Cllr Sue Hughes has been helping out with these sessions.
  - We've been giving more waste workshops to students at Lyneham Primary and St Bartholomew's RWB and run a staff training session and waste audit to make sure St Bartholomew's is recycling all they can and reducing waste. During November Aisling will be doing waste workshops with students at St Mary's CE Primary School, Purton.
  - We've been in touch with other local Primary Schools in the Area and are keen to work with them so please let us know if you can help us to book in our free sessions.

- 
- Chelsie's worked with Purton & Lydiard Scout Group to make sure they all know what to recycle at home and how to reuse rubbish with some upcycled wildlife gardening. She's been running sessions with children at Thames Preschool and a staff training session to help them recycle more and reduce waste, and they'll be going for our Wiltshire Waste Watcher Award. Chelsie's also run more sessions with the Little Stars Babes & Tots group in RWB to share more of our reducing rubbish, increase recycling tips.
-





# Royal Wootton Basset and Lyneham – June and July 2017

## SUMMARY of RWB:

Through August into September we spent our sessions on Longleaze Park engaging in various activities and numerous sports and were quite lucky dodging the rainy days! Sessions included:

- exercises on healthy friendships and personality traits
- positive use of social media
- support leading up to and with exam results
- positive encouragement with transferring to college
- Henna art was very popular
- Plus the usual fun games.

RWB sessions are always well attended. However, some of the young people in attendance are in need of ongoing support with various social issues. Sometimes the youth workers struggle to meet the needs of these young people within the session time so will stay longer in order to support these individuals.

Mid-September saw us move indoors to our new hall so the young people have had the opportunity to bake and cook healthy meals.

During the summer councillor Sue Hughes visited us to gain young people's views on provision for young people in RWB. She has promised to visit again in October. In discussion with Sue some of the young people showed interest in participating on the LYN committee.

## TWO MONTHS SESSIONS:

### RWB-

03/08/17- 12 young people  
10/08/17- 17 young people  
17/08/17- 10 young people  
24/08/17- 26 young people  
31/08/17- 27 young people  
07/09/17- 23 young people  
14/09/17- 23 young people  
18/09/17- 32 young people  
25/09/17- 24 young people

### LYNEHAM-

04/08/17- 18 young people  
11/08/17-14 young people  
18/08/17-14 young people  
25/08/17- 17 young people  
01/09/17- 14 young people  
08/09/17- 9 young people  
15/09/17- 15 young people  
22/09/17- 16 young people  
29/09/17- 10 young people

## ISSUES FACED:

RWB-We now have a new room which is much more suitable than the last room, however, this brings with it new challenges in regard to hiring a shared venue which is also in close proximity to residential housing.

LYNEHAM- We have said goodbye to a number of our regular young people due to relocation with in the military but have made contact with a number of new young people.

## **LYNEHAM:**

We have seen a small drop in numbers mainly due to young people being relocated out of the area (one of the few downsides of working with a large percentage of military-involved families). During the summer we have supported a few individuals with feelings and concerns around moving. We have met a few new young people who have recently moved to the area.

Outside sessions at Lyneham included BBQ, bullying awareness, exam support, healthy friendships and positive social media use. Lyneham have made good use of our new “beer goggles”, which are a tool to increase alcohol awareness. From the beginning of September we moved indoors so the young people requested cookery sessions. The young people at Lyneham continue to enjoy group games even encouraging the local PCSO to join in when he paid us a visit!

## **CMAS: THE BIGGER PICTURE**

CMAS is increasingly involved in working in alternative education for young people who are not attending school. This brings with it many challenges and the last three months have been marked by a self-auditing process to ensure that we are ready for any inspection that may come our way.

We are even mulling over the idea of forming a free-school. This is an arduous and paper-heavy task but, as CMAS grows and works with more and more young people in creative ways, one which may be of benefit to the organisation.

## **CASE STUDY:**

“K”, 14, is a young woman who attends our youth club on a weekly basis. She lives in a family where there has been a break down in relationship between her parents, to the extent that one of her parents is not allowed to spend time with her unsupervised.

“K” approached one of our youth workers who she has a strong and ongoing relationship with. She asked the youth worker whether she would mind being the person who went with her to her appointments with her parent, the “minder” for want of a better word! After doing some ground work with the young woman’s social worker our youth worker agreed and it is planned to take place soon this month.

This is a very good example of the purpose of youth work – through fun and informal activities youth workers create trusting, professional relationships with young people. When crisis’ happen for young people they have someone to turn to who they can trust to act professionally and supportively.





# Cricklade Youth Project Report – August and September 2017

## SUMMARY:

August and September have seen us having irregular numbers of young people; a factor in this was some sessions being “blessed” with wet, rainy weather. Inevitably in detached work this means there are less young people out and about as they understandably prefer not to come outside and get wet!

However, engagement with the young people has led to an increase in trusting relationships with some individuals and an increase in our “reach” of young people we work with regularly. Youth workers have engaged in positive activities with the young people that have included:

- drugs awareness
- positive use of social media
- sexual health (including condom distribution and chlamydia testing)
- exam result support
- art activities including henna art

Youth workers have become aware of a friendship break up within the large group of young people who we have been most in contact with (we believe these are the young people largely responsible for the anti-social behaviour in Cricklade).

Youth workers have started to have conversations and challenge the young people regarding anti-social behaviour and their place in the community. Young people have continued to be polite and open with the youth workers. The next stage for the youth workers is to continue building relationships with the young people but recognise that it is going to take some time, however, the young people have expressed they would be willing to venture indoors if they could have access in the hall adjacent to the skate park.

**TWO MONTHS SESSIONS** (with number of young people engaged with):

02/08/17- 18 young people  
07/08/17- 24 young people  
09/08/17- 9 young people  
14/08/17- 4 young people  
16/08/17- 5 young people  
21/08/17- 3 young people  
23/08/17- 23 young people  
30/08/17- 6 young people  
06/09/17- 18 young people  
11/09/17- 4 young people  
13/09/17- 15 young people  
19/09/17- 14 young people  
21/09/17- 9 young people  
26/09/17- 9 young people  
28/09/17- 16 young people

## ISSUES FACED:

Rainy weather made street based youth work more challenging.

Young people have been generally unreliable in attendance; also the young people have had use of a parent/guardian house to smoke cannabis which has impacted on attendance.

On two occasions youth workers found young people directly behind leisure centre with older males in cars allegedly from north Swindon

## **DETACHED v CENTRE BASED?**

Doing detached youth work has benefits. There are no issues of “policing” young people to protect the venue, often an issue in shared use buildings. It is also completely on the young peoples’ terms as they can choose to engage or not completely freely.

It also has its drawbacks. It is totally reliant on the weather and a couple of wet weeks mean that we may not see the same young person for three or four weeks. This makes building up trusting relationships difficult.

Due to the reach we have in Cricklade we would like to bring the group together and launch a centre based session, one evening a week. Our staff have produced flyers that they are distributing in a push to get a regular, detached meeting space for the young people. We would like this to lead to a centre based session over the winter.

We have viewed various halls and locations and believe the best spot to be the annexe to the leisure centre. Young people naturally congregate in this area and it is self-sufficient enough to not mean introducing a horde of young people to mixed use areas. We will work with the Town Council to try and realise this ambition over the summer.

### **CMAS behind the scenes:**

CMAS is increasingly involved in working in alternative education for young people who are not attending school. This brings with it many challenges and the last three months have been marked by a self-auditing process to ensure that we are ready for any inspection that may come our way.

We are even mulling over the idea of forming a free-school. This is an arduous and paper-heavy task but, as CMAS grows and works with more and more young people in creative ways, one which may be of benefit to the organisation.

# **Update for Royal Wootton Bassett & Cricklade Area Board**

<b>Update from</b>	<b>Cricklade Town Council</b>
<b>Date of Area Board Meeting</b>	8 November 2017

## **Headlines/Key Issues**

- A Public Meeting and an Extra Ordinary Meeting were held on Tuesday, 17 October at Cricklade Town Hall to discuss the Community Asset Package Offer received from Wiltshire Council. The Chairman, Councillor Mark Clarke explained the package (the freehold of the Ockwells site, (the Town Council Offices, the Library and Doctors Surgery), the Leisure Centre building and grounds and a major part of the Town Hall car park. There were 135 members of the Public in attendance. After the Public meeting, an Extra Ordinary meeting of the Council took place. Following discussions, Members unanimously accepted (in principle) the Community Asset Transfer subject to the Statement of Key Principles. The proposal will be presented to Wiltshire Cabinet in December 2017, the tender process is aimed for May/June 2018, to be finalised in August/September, with an estimated 10 -12 month programme of works. Due to finish in September/October 2019. The minutes and notes of these meetings can be found on the Cricklade Town Council website: [www.crickladetowncouncil.gov.uk](http://www.crickladetowncouncil.gov.uk)

*Photo by Allison Bucknell*



- 
- Saturday 2<sup>nd</sup> December, the Christmas Lights will be switched on in the High Street, the evening will start with a Children's Lantern Parade at 5,15pm. Entertainment from the Community Choir and Cricklade Band and a special performance from Dizzy Twilight, fresh from her semi-final appearance in Britain's Got Talent 2017, with local Stalls and refreshments.
- 
- St Sampson's Church Christmas Tree Festival - Saturday 2nd December (10am-5pm) and Sunday 3rd December (11am - 4pm). Over 30 decorated trees with entertainment and refreshments throughout the weekend.
- 
- Saturday 9<sup>th</sup> December, Christmas Wreath making Workshop (9.30 - 12.30). Refreshments will be available

Please visit the Cricklade Town Council website for further details on these events, and others taking place over the next weeks

